

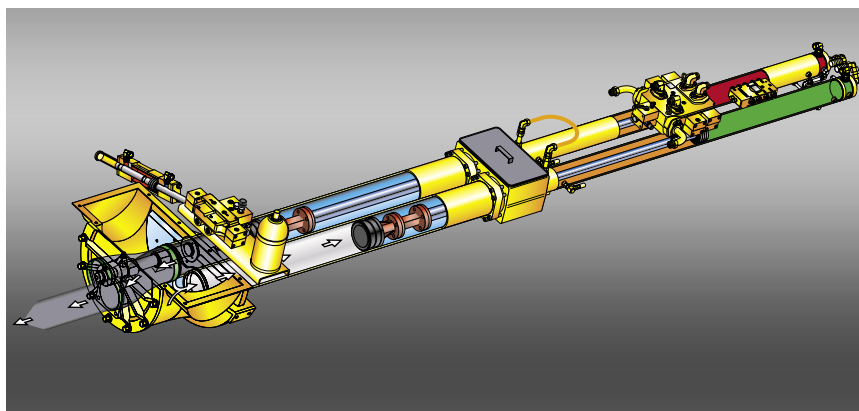
S 36 SX

Truck-Mounted concrete pump
with RZ4 placing boom



36-METER **RZ⁴** BOOM

We put the Z where it counts.



This open loop **Generation 3** all-hydraulic concrete pump sets the standard for fuel-efficiency, reliability and performance. Twin circuit hydraulics combine with the longest stroking pumping cylinders in the industry for a smooth, continuous flow of concrete which also translates to longer boom life. **Big Rock Valve** is designed to pump the harshest mixes and provide the lowest per yard operating costs.



Patented **Vector Controls** allow two-way communication between pump and operator. Critical real-time operating data is displayed at the remote box and stored in the controller for easy retrieval.



Only Schwing combines the best features of two boom types – Roll and Fold™ and Z in a unique four-section boom. By putting the 270-degree Z-fold at the tip section, operators have unprecedented boom maneuverability while placing concrete up to 118-feet vertically and 104-feet horizontally. In the travel position, the RZ4's second section is angled to one side - minimizing travel length. The innovative design allows the boom to straighten itself as it unfolds. Short pipe arm holders result in the smoothest 36 meter available and the ability to position the unique boom in tighter areas. Whether it is in a window or up tight to a column, you'll reach more of the pour area with the RZ4 "straight line" boom.

The standard Generation 3 2025-5 120/80 MPS concrete pump is the low-maintenance, long-lasting, high performance unit that provides up to 178 cubic yards per hour output at only 23 strokes per minute. Carbide Rock Valve wear parts are standard to extend maintenance intervals.

Consider the versatility of the RZ4 boom, the output capabilities of the pump and the maneuverability of a three-axle truck and you have a high utilization unit that is a stand-alone boom pump for the majority of projects or a valuable addition to a fleet.



RZ4 boom's design results in reduced travel length with shorter pipe arm holders for better access in tight areas.



Super X outriggers are a Schwing exclusive providing maximum stability with the smallest footprint. These telescopic, single-stage outriggers set-up fast and don't extend in front of the cab for maximum horizontal boom reach.

Only one manufacturer can supply the Schwing experience.

Thousands of our customers form a backdrop of success that you can join by letting us spec the right piece of equipment for your needs. Six company stores with technicians and parts placed strategically across the country provide service expertise as close as your phone. And a select group of knowledgeable dealers provides another layer of invaluable experience. You and your staff will be welcomed into our dedicated training facility to learn how to extract the maximum profitability from your Schwing. And your investment is backed by the exclusive Green Shield warranty that can be extended to an industry-leading three years.

Generations of successful owners have chosen the Schwing experience. As a third generation family-owned company we understand how important quality equipment is to your business and how important your business is to us.



More than 400,000 square feet are devoted to producing the highest quality concrete equipment at our [White Bear, Minnesota](#) plant. From close inspection of incoming materials to forming our products with the latest robotic welding techniques, Schwing takes craftsmanship to the highest standards. Our state-of-the-art paint facility produces finished products you will be proud to put your name on. In addition, a vast inventory of parts are on hand to keep your Schwing product running at maximum efficiency. Please schedule a visit to this modern facility located minutes north of Minneapolis/St. Paul to see our long-term commitment to the market.

SPECIFICATIONS

Pump Kit on S 36 SX

2025-5 120/80 MPS

U.S.

Metric

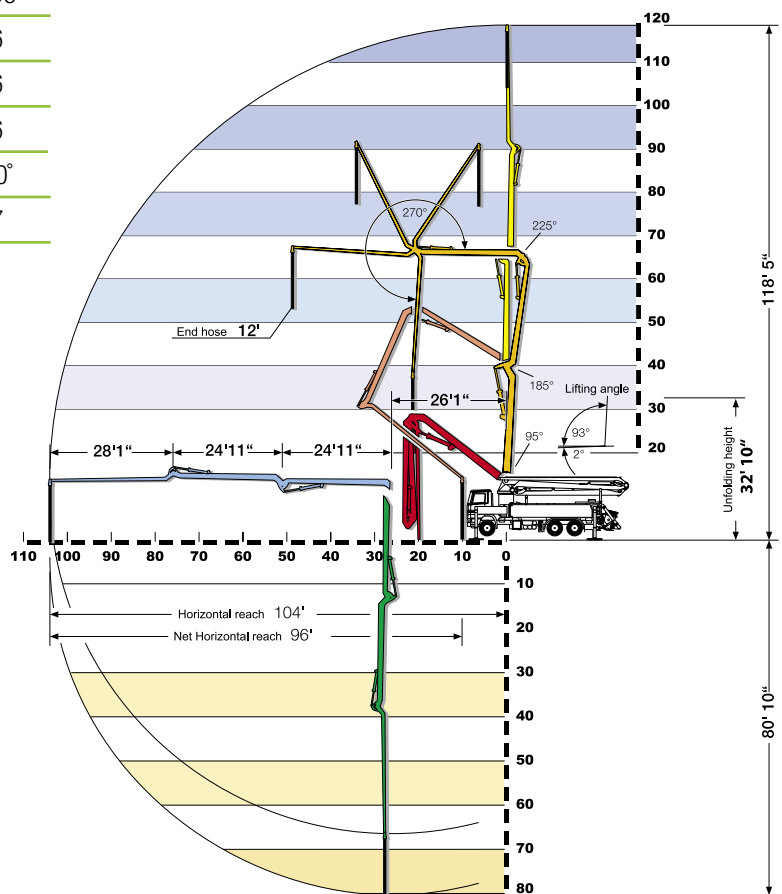
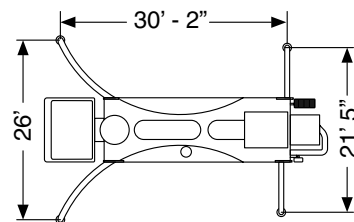
Theor. Concrete Output Per Hour (cubic yards - cubic meters)	178	136
Maximum Pressure on Concrete (psi - bar)	1233	85
Maximum Strokes Per Minute	23	23
Pump Cylinder Diameter (in. - mm)	10	250
Pump Cylinder Stroke Length (in. - mm)	79	2000
Differential Cylinder Size (in. - mm)	4.7	120
Maximum Aggregate Size (in. - mm)	2.5	63.5

Boom Specifications

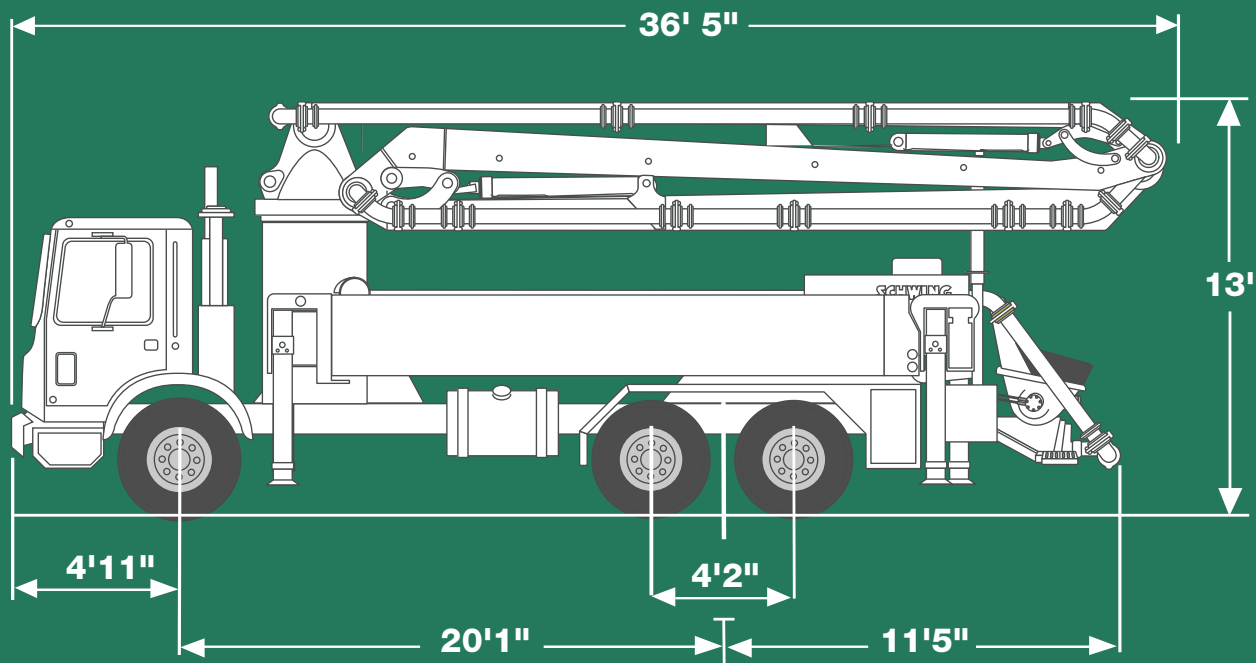
	U.S.	Metric
Pipeline Diameter (in. - mm)	5	125
Vertical Reach (ft.-in. - m)	118-5	36.1
Horizontal Reach (ft. - m)	104	31.7
Net Horizontal Reach (ft. - m)	96	29.3
Unfolding Height (ft.-in. - m)	32-10	10
Section Lengths		
First Section (ft.-in. - m)	26-1	7.95
Second Section (ft.-in. - m)	24-11	7.6
Third Section (ft.-in. - m)	24-11	7.6
Fourth Section (ft.-in. - m)	28-1	8.6
Slewing Range (degrees)	740°	740°
End hose length (ft. - m)	12	3.7

Specifications are subject to change without prior notice.

RZ4



S 36 SX (Dimensions shown apply to Mack truck mounted units and may vary unit to unit or for other makes and models of trucks.)

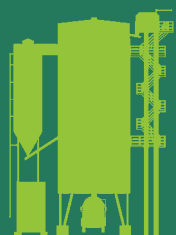


SCHWING-STETTER MOVES CONCRETE. **WORLDWIDE.**

Wherever concrete is produced and moved is where you will find Schwing-Stetter machinery.

With plants in Germany, Austria, USA, Brazil, Russia, China and India as well as with more than 100 sales and service facilities, the group of companies is always close to the customer.

Our wide range of products with something for every application is what makes Schwing-Stetter the No. 1 system supplier for concrete machinery worldwide.



**CONCRETE
BATCHING PLANTS**



**TRUCK
MIXERS**



**TRUCK-MOUNTED
CONCRETE PUMPS**



**STATIONARY
CONCRETE PUMPS**



**SEPARATE
PLACING BOOMS**



**CONCRETE
RECYCLERS**